

Installation Instructions for SBL639/SP Digital Lock when used with Touch Bar Latch.

The safety features of this product are essential to its compliance with EN1125: 2008 and EN179: 2008. No modification of any kind, other than those described in these installation instructions are permitted.

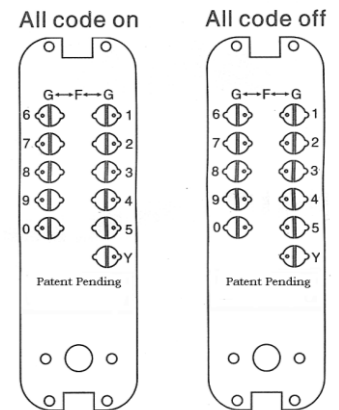
Installation

- Correctly position and tape the template (T/SED900/025), to internal face of door, at correct height from the floor level.
- Check that when the door is closed the edge of the door frame is correctly aligned with the marked door edge on template.
- Mark the 4 pilot holes to secure the Touch Bar bracket
- Mark the two 8mm holes, for bolt through fixings and cup washers to secure Digital Lock
- Mark the 19mm diameter hole for the connecting bar of the Digital Lock
- If fixing to Rebated Double Doors mark position of holes for Universal Strike on the Inactive Leaf.
- Drill all marked holes.
- Counter sink the lower 8mm hole by 10mm for brass cup washer

Setting/Changing the Code

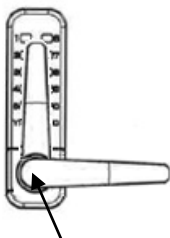
- On the reverse of the Digital Lock Unit you will see slotted buttons which correspond to the push buttons on the front of the Lock.
- To set a button to operate within the code turn the slotted button relating to the number so that the dot is facing outwards (towards the 'G')
- To take a button out the code turn the slotted button so the dot is facing inward (towards the 'F')
- Check the code on the Lock functions before fitting to the door.

IMPORTANT: Always press the 'C' button before inputting the programmed code

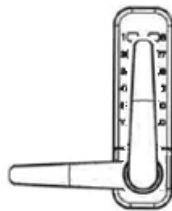


Handing the Digital Keypad

For Left-handed use

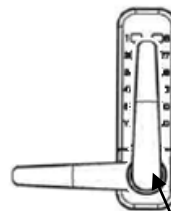


Locate the Grub Screw in the Lever Handle unscrew and remove it using the supplied Allen Key.

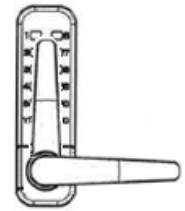


After removing the Grub Screw; lift and rotate the lever handle 180 degrees anti-clockwise. Relocate the grub screw and tighten to secure lever handle

For Right-handed use



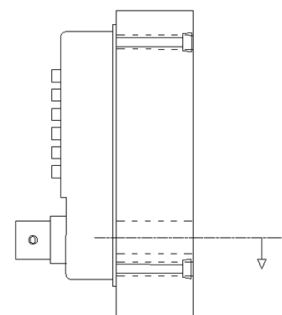
Locate the Grub Screw in the Lever Handle unscrew and remove it using the supplied Allen Key.



After removing the Grub Screw; lift and rotate the lever handle 180 degrees clockwise. Relocate the grub screw and tighten to secure lever handle

Fixing the Lock

- Cut the fixing bolts to suit door thickness, for the Digital Mechanical Lock, allowing at least 4/5 threads to screw into the lock case
- Locate the rubber seal behind the Digital Lock and using the fixing bolts and cup washers secure the top and bottom of the Lock to the door.
- Before final tightening ensure the lock is vertical and test mechanism to ensure that it is moving freely.



Distance from floor to be between 900mm-1100mm

22nd August 2018

Touch Bar

- Position and secure the Touch Bar Support Plate to the internal face of the door.
- Prepare Touch Bar for installation as per separate Installation Instructions.
- **Before** securing the rest of the Touch Bar to door follow the steps below.
- **FOR LEFT HANDED** installation the Brass Bush must be located in the Touch Bar as seen in Figure 1 and the Adapter should be located within the Brass Bush as shown in Figure 1A.
- **FOR RIGHT HANDED** installation the Brass Bush must be located in the Touch Bar as seen in Figure 2 and the Adapter should be located within the Brass Bush as shown in Figure 2A.
- Cut Connecting Bar (with spring) down to size, without damaging the spring; for a door thickness of 44mm the connecting bar needs to be 50mm in length. For a door thickness of 54mm it needs to be 60mm in length
- Locate the Connecting Bar into the follower of the Digital Lock with the end, that has been cut, positioned in the adapter on the back of Touch Bar mechanism.
- Secure Touch Bar mechanism to the Support Plate and check all parts are functioning correctly before closing the door.

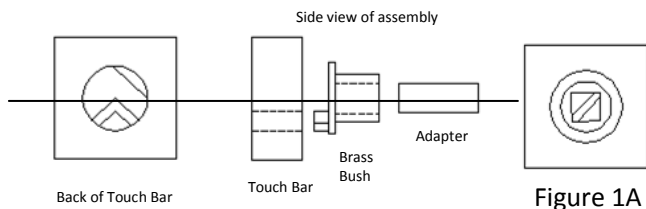


Figure 1

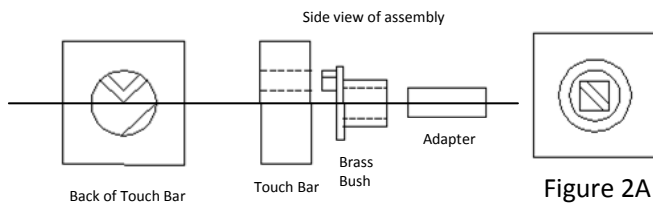


Figure 2