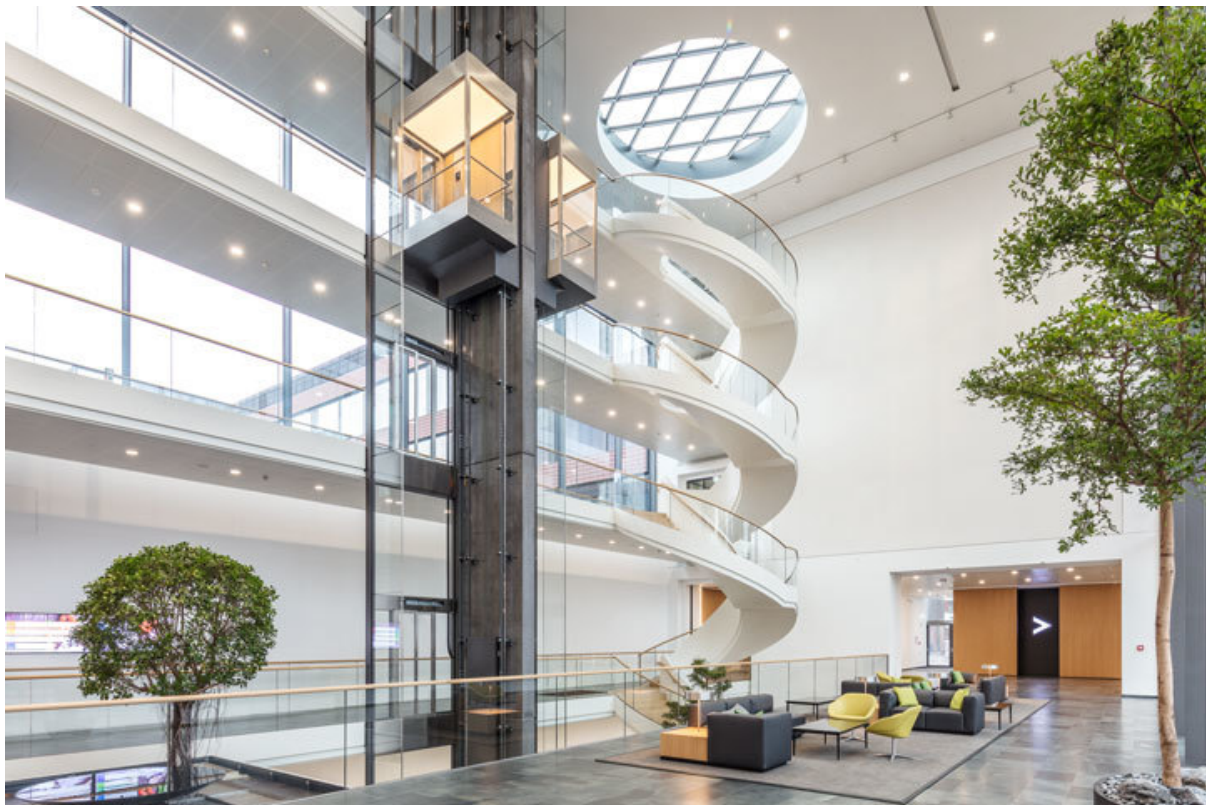


Product data sheet

Closer body TS 2000

V



Main body for overhead door closer with link arm EN2, 4 or 6

AREAS OF APPLICATION

- Fire and smoke protection doors
- Right and left single-action doors
- Single-action doors up to 1250 mm leaf width
- Door leaf installation hinge side and transom installation opposite hinge side
- Door leaf installation opposite hinge side in parallel arm installation possible

Closer body TS 2000 V



PRODUCT FEATURES

- Variable closing force through offset installation of the housing
- Closing seed can be adjusted from the front via valve
- Latching action can be adjusted via link arm
- Door closer, can be used for right and left hand doors
- Door closer, can be used for leaf and transom installation
- Minimal installation effort due to low number of individual parts and quick setting

TECHNICAL DATA

Productname	Closer body TS 2000 V
Closing force in accordance with EN 1154	EN 2/4/5
Leaf width (max.)	1250 mm
Type of installation	Door leaf installation hinge side, Transom installation opposite hinge side, Door leaf installation opposite hinge side
Opening angle (max.)	180 °
Identical design for DIN left and DIN right	true
Approvals	Door closer tested in accordance with EN 1154
Suitability for fire protection doors	Yes
Length	226 mm
Width	48 mm
Height	60 mm
Closing force adjustable	Yes, via installation
Adjustable closing speed	Yes
Latching action adjustable	Yes, via link arm
Back check integrated	No
Position of closing force adjustment	Installation position
Thermo-control valves	Yes

VARIANTS / ORDER INFO

Name	Description	Ident-No.	Colour	Closing force	Dimensions
GEZE TS 2000 V door closer	Size EN 2/4/5 (without link arm)	103388	white RAL 9016	EN 2/4/5	226 x 48 x 60 mm
GEZE TS 2000 V door closer	Size EN 2/4/5 (without link arm)	103389	acc. to RAL	EN 2/4/5	226 x 48 x 60 mm
GEZE TS 2000 V door closer	Size EN 2/4/5 (without link arm)	103387	dark bronze	EN 2/4/5	226 x 48 x 60 mm
GEZE TS 2000 V door closer	Size EN 2/4/5 (without link arm)	103386	silver-coloured	EN 2/4/5	226 x 48 x 60 mm

Closer body TS 2000 V



INSTALLATION MATERIAL

MOUNTING PLATE SEGMENTAL ARCHED DOOR

for TS 2000 V, arch height max. 130mm



Name	Description	Ident-No.	Colour
Mounting plate segmental arched door	for TS 2000 V, arch height max. 130mm	059045	dark bronze
Mounting plate segmental arched door	for TS 2000 V, arch height max. 130mm	059044	silver-coloured

GLASS CLAMPING SHOE

for TS 2000 V



Name	Description	Ident-No.	Colour
Glass clamping shoe	for TS 2000 V	009500	acc. to RAL
Glass clamping shoe	for TS 2000 V	009499	white RAL 9016
Glass clamping shoe	for TS 2000 V	055773	silver-coloured
Glass clamping shoe	for TS 2000 V	055774	dark bronze

MOUNTING PLATE DOOR CLOSER

for TS 2000 V



Name	Description	Ident-No.	Colour
Mounting plate door closer	for TS 2000 V	055756	galvanised

Closer body TS 2000 V



LINTEL CASING BRACKET

for TS 2000 V



Name	Description	Ident-No.	Colour
Lintel casing bracket	for TS 2000 V	055766	silver-coloured
Lintel casing bracket	for TS 2000 V	055767	dark bronze
Lintel casing bracket	for TS 2000 V	104450	acc. to RAL