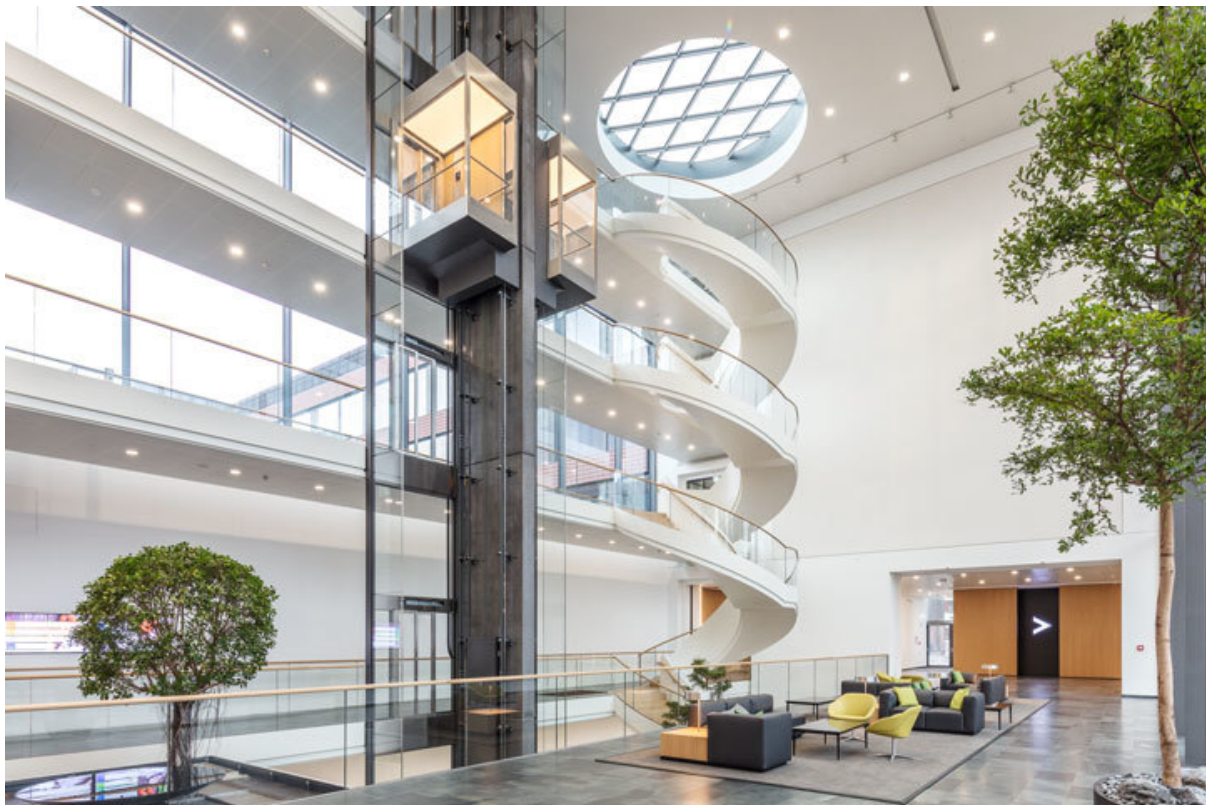


Product data sheet

Closer body TS 2000

NV



Main body for overhead door closer with link arm EN2, 4 or 6

AREAS OF APPLICATION

- Fire and smoke protection doors
- Right and left single-action doors
- Single-action doors up to 1100 mm leaf width
- Door leaf installation hinge side and transom installation opposite hinge side
- Door leaf installation opposite hinge side in parallel arm installation possible

Closer body TS 2000 NV



PRODUCT FEATURES

- Closing force with variable adjustment from the side
- Closing seed can be adjusted from the front via valve
- Latching action can be adjusted from the front via valve
- Door closer, can be used for right and left hand doors
- Door closer, can be used for leaf and transom installation
- Minimal installation effort due to low number of individual parts and quick setting

TECHNICAL DATA

Productname	Closer body TS 2000 NV
Closing force in accordance with EN 1154	EN 2 - 4
Leaf width (max.)	1100 mm
Type of installation	Door leaf installation hinge side, Transom installation opposite hinge side, Door leaf installation opposite hinge side
Opening angle (max.)	180 °
Identical design for DIN left and DIN right	true
Approvals	Door closer tested in accordance with EN 1154
Suitability for fire protection doors	Yes
Length	226 mm
Width	48 mm
Height	60 mm
Closing force adjustable	Yes, stepless
Adjustable closing speed	Yes
Latching action adjustable	Yes, via valve
Back check integrated	No
Position of closing force adjustment	At the side
Thermo-control valves	Yes

VARIANTS / ORDER INFO

Name	Description	Ident-No.	Colour	Closing force	Dimensions
GEZE TS 2000 NV Closer	Size EN2-4 (without link arm)	128888	acc. to RAL	EN 2 - 4	226 x 48 x 60 mm
GEZE TS 2000 NV Closer	Size EN2-4 (without link arm)	128885	silver-coloured	EN 2 - 4	226 x 48 x 60 mm
GEZE TS 2000 NV Closer	Size EN2-4 (without link arm)	128887	white RAL 9016	EN 2 - 4	226 x 48 x 60 mm
GEZE TS 2000 NV Closer	Size EN2-4 (without link arm)	128886	dark bronze	EN 2 - 4	226 x 48 x 60 mm

Closer body TS 2000 NV



INSTALLATION MATERIAL

MOUNTING PLATE SEGMENTAL ARCHED DOOR

for TS 2000 NV, arch height max. 130 mm



Name	Description	Ident-No.	Colour
Mounting plate segmental arched door	for TS 2000 NV, arch height max. 130 mm	127434	silver-coloured
Mounting plate segmental arched door	for TS 2000 NV, arch height max. 130 mm	127435	acc. to RAL

GLASS CLAMPING SHOE

For TS 3000 / 2000 NV



Name	Description	Ident-No.	Colour
Glass clamping shoe	for TS 3000/TS 2000 NV	014835	silver-coloured
Glass clamping shoe	for TS 3000/TS 2000 NV	014843	white RAL 9016
Glass clamping shoe	for TS 3000/TS 2000 NV	014836	dark bronze
Glass clamping shoe	for TS 3000/TS 2000 NV	014845	acc. to RAL

MOUNTING AND COUNTERPLATE FOR ALL-GLASS DOOR

For TS 3000 / 2000 NV



Name	Description	Ident-No.	Colour
Mounting and counterplate for all-glass door	for TS 3000/TS 2000 NV	090259	silver-coloured

Closer body TS 2000 NV



MOUNTING PLATE DOOR CLOSER

For TS 2000 NV (BC) with hole pattern in accordance with DIN EN 1154 Supplement 2



Name	Description	Ident-No.
Mounting plate door closer	for TS 2000 NV and NV BC with hole pattern according to DIN EN 1154 Supplement 1	126234

LINTEL CASING BRACKET

For TS 3000 / 2000 NV

Name	Description	Ident-No.	Colour
Lintel casing bracket	for TS 2000 NV / TS 3000 V	127433	acc. to RAL
Lintel casing bracket	for TS 2000 NV / TS 3000 V	127432	silver-coloured