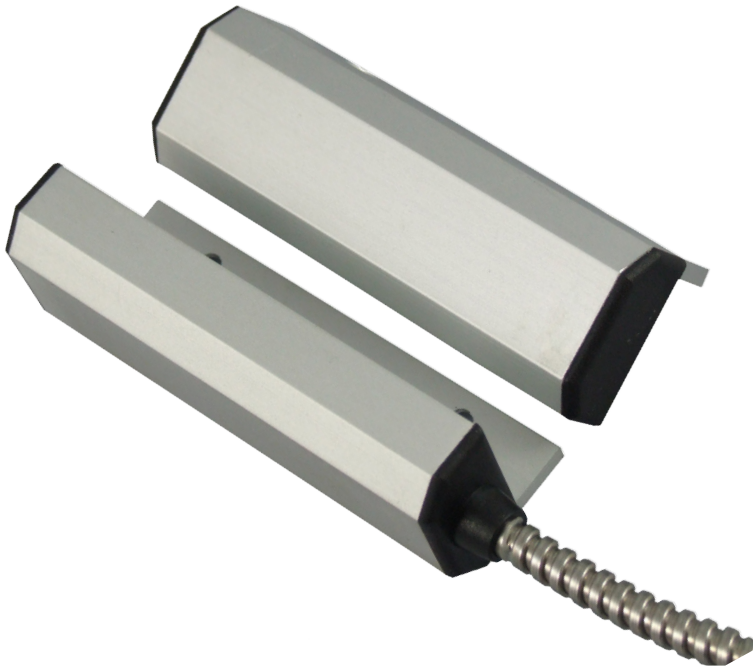


GP001/G2
Heavy Duty Contact



- High Quality Alloy Finish
- Double pole configuration
- 57cm Armoured cable lengths
- EN50131-2-6 Grade 3
- Environmental Class II



Product codes

Code	Description
GP001/G2	Aluminium Door Contact Grade 2

Technical data

Connections	4 Core x 7/0.2 Copper Cable	Voltage Range	12Vdc
Cable Length	570mm	Switching Current	500mA @ 12Vdc
Switches	1	Contact Material	Rhodium
Pull-in Gap	45mm	Colours	Brushed Aluminium
Material	Aluminium / ABS	Tamper	Tamper Integrity Loop
Contact Size	85 x 27 x 26mm	Standards	EN50131-2-6 Grade 2
Magnet Size	85 x 27 x 26mm	Environmental Class	II
Contact Form	SPST form A		

rev. 2-7/2018



www.cqr.co.uk

info@cqr.co.uk

Sales: +(0)151 606 1000 Tech: +(0)151 606 6311

CQR Fire & Security, 125 Pasture Road, Moreton, Wirral, CH46 4TH, UK



Scan or click for online

